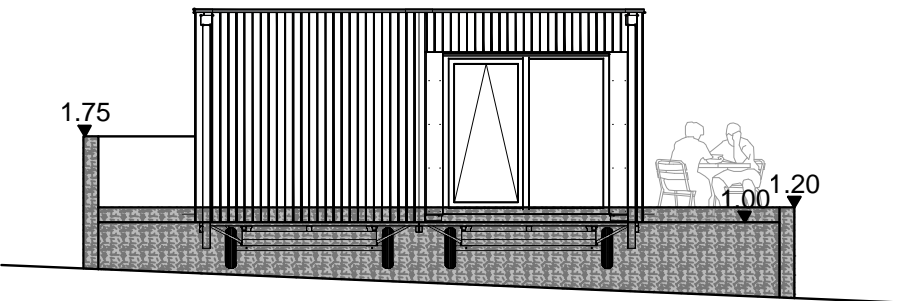
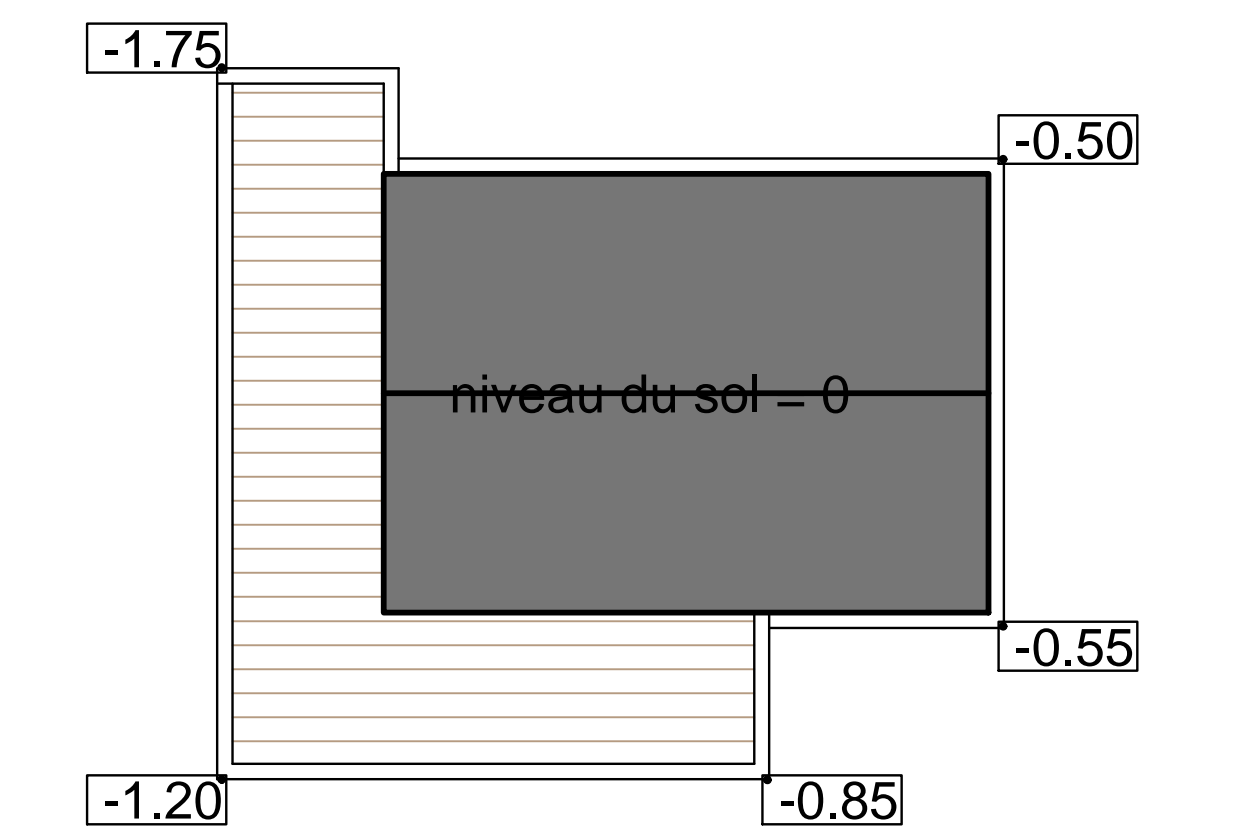
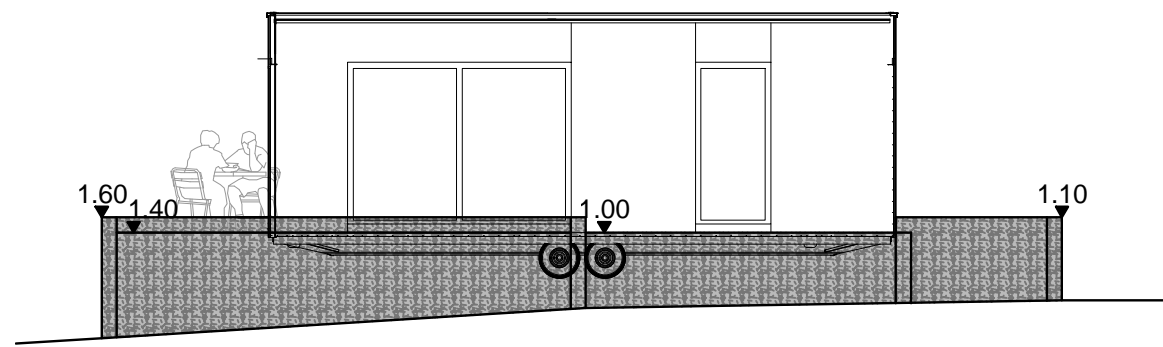
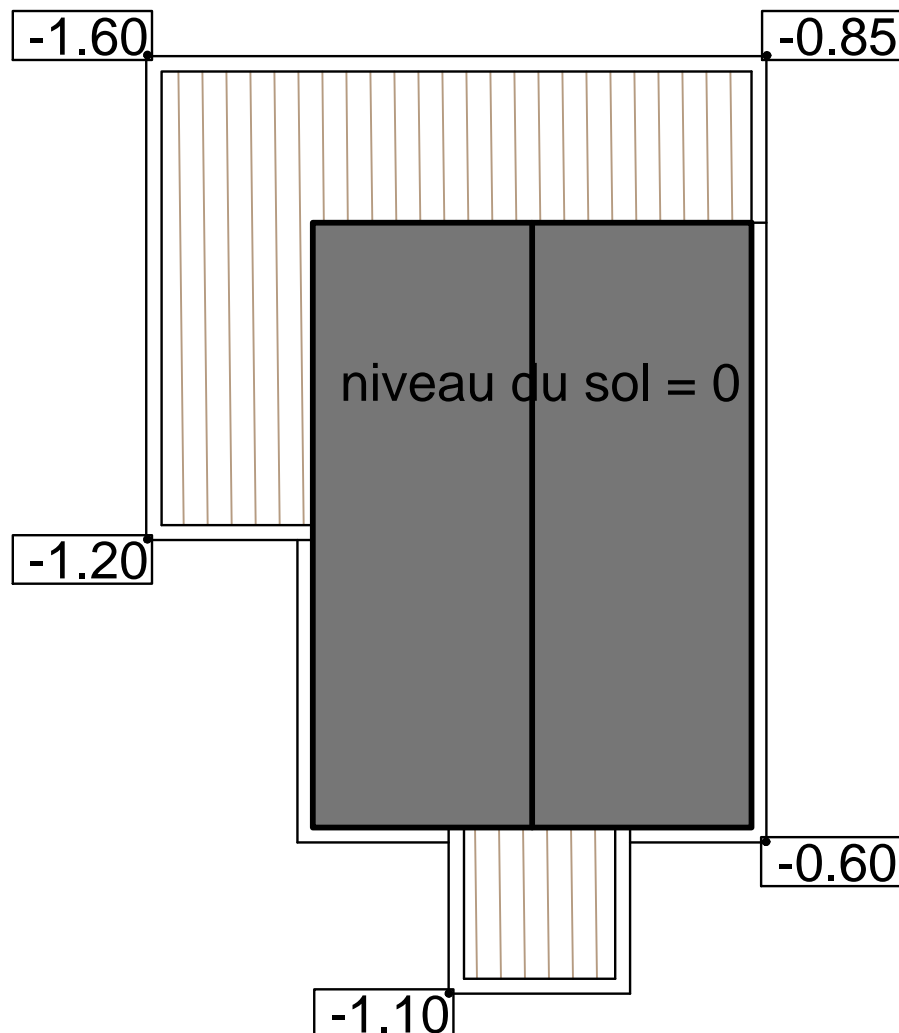


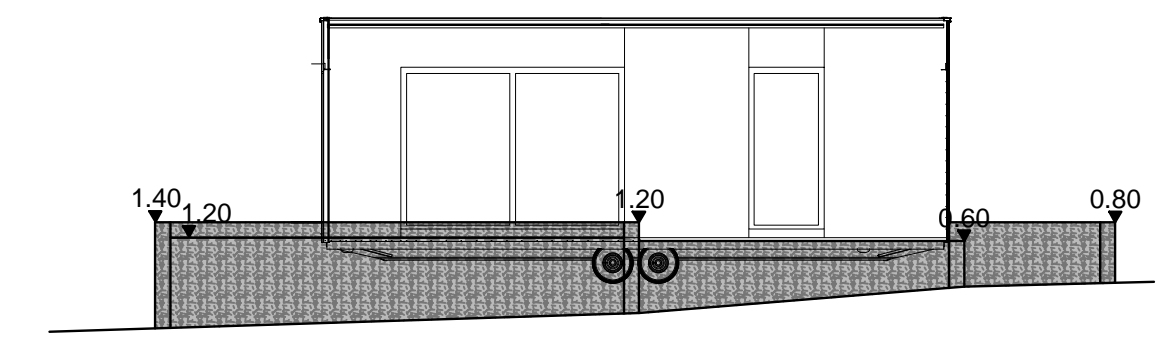
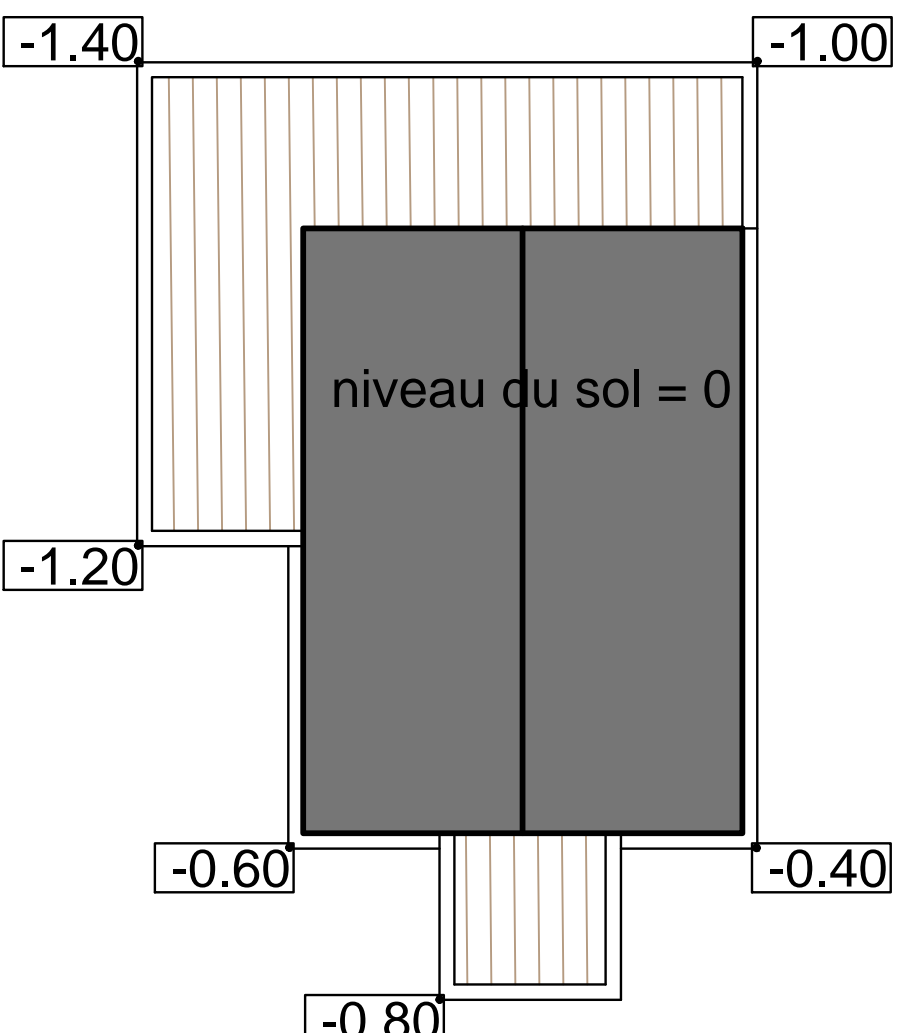
Mobil home Domus



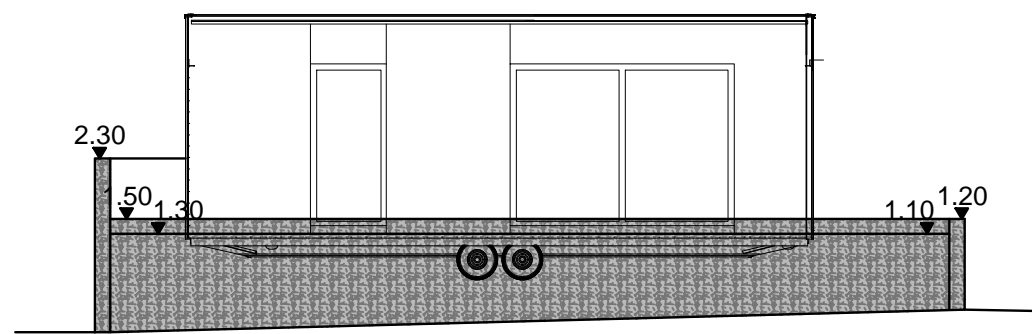
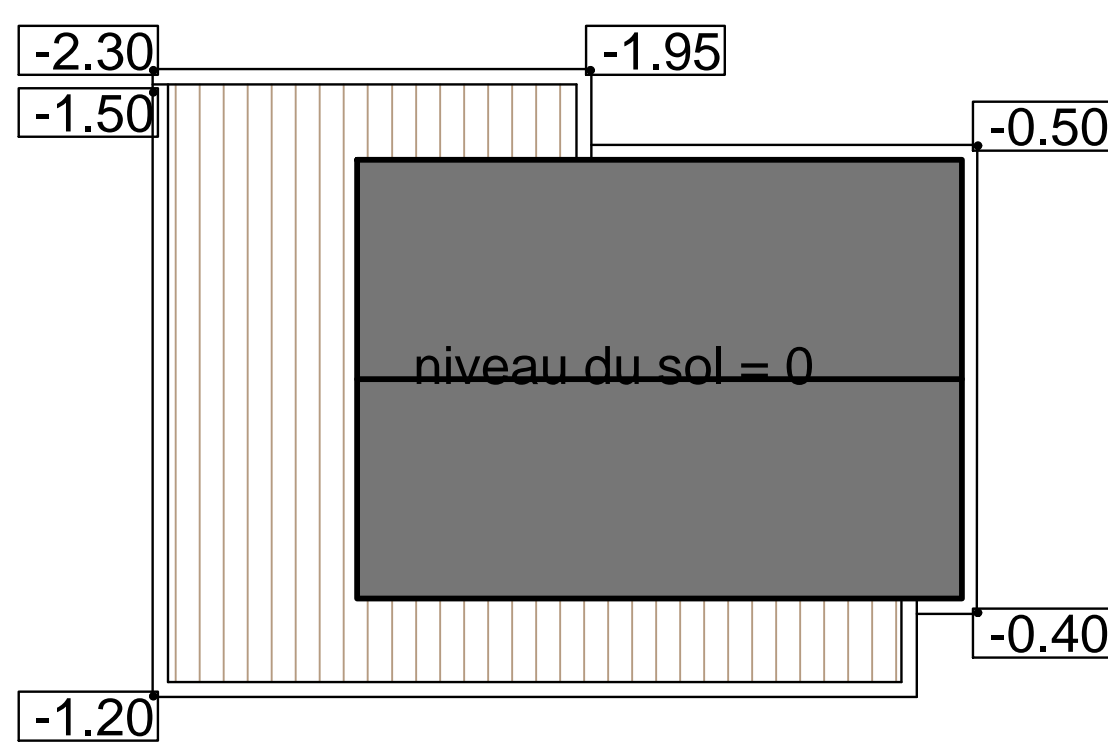
Mobil home Belsano



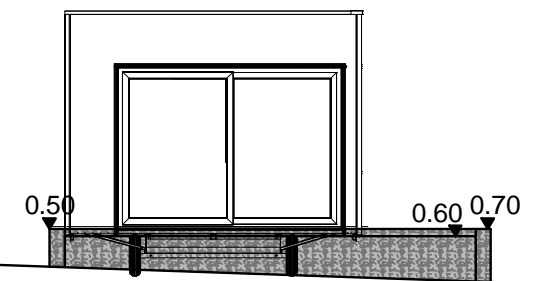
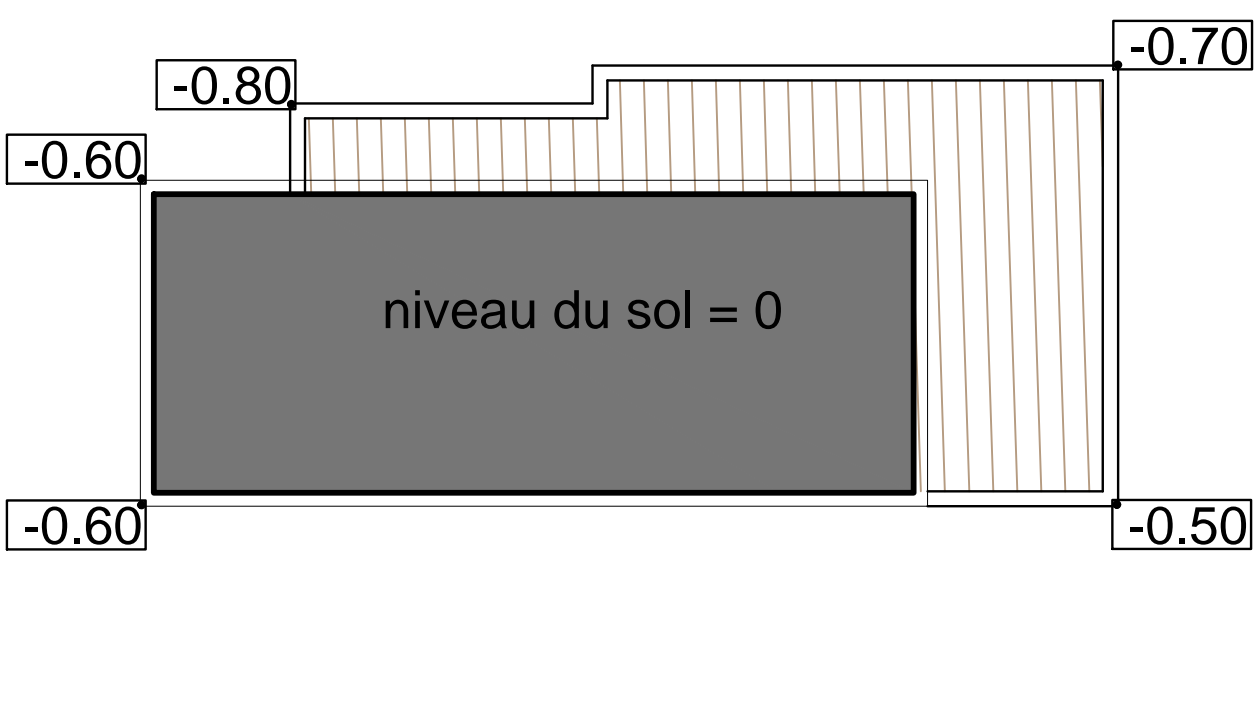
Mobil home Belsano



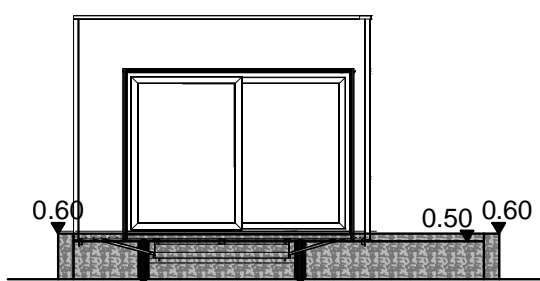
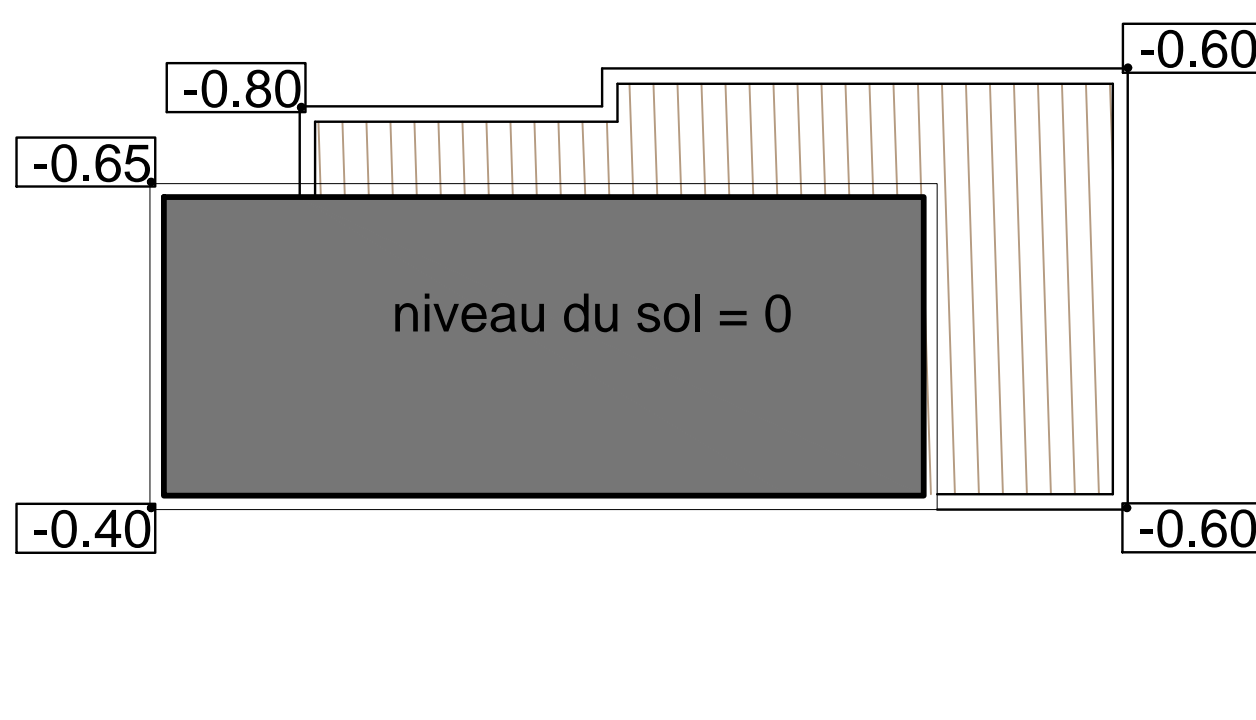
Mobil home Domus



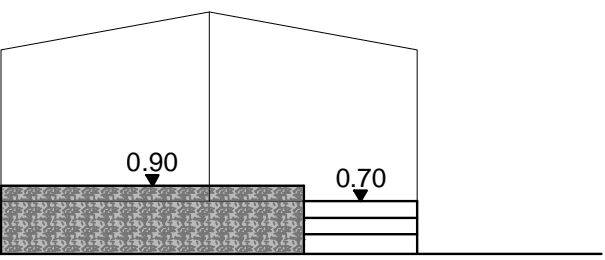
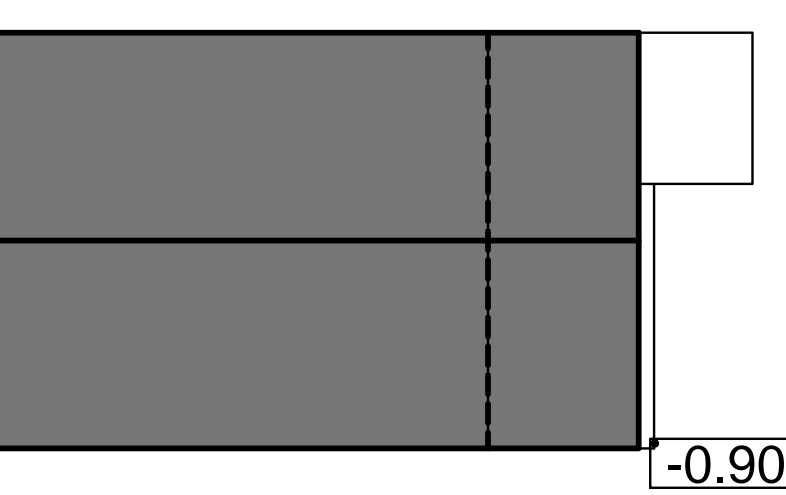
Mobil home Tiny House



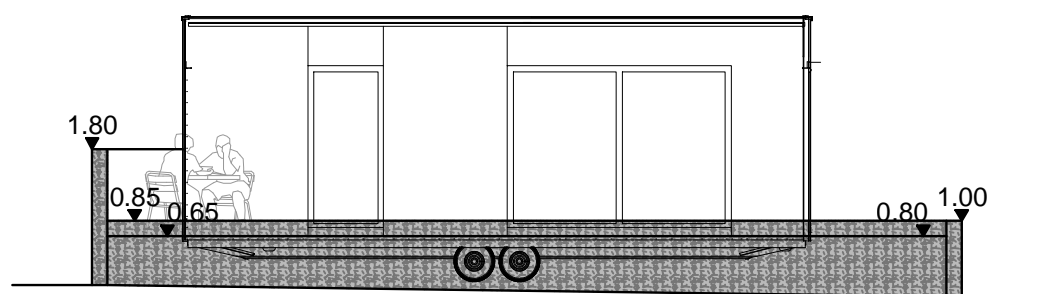
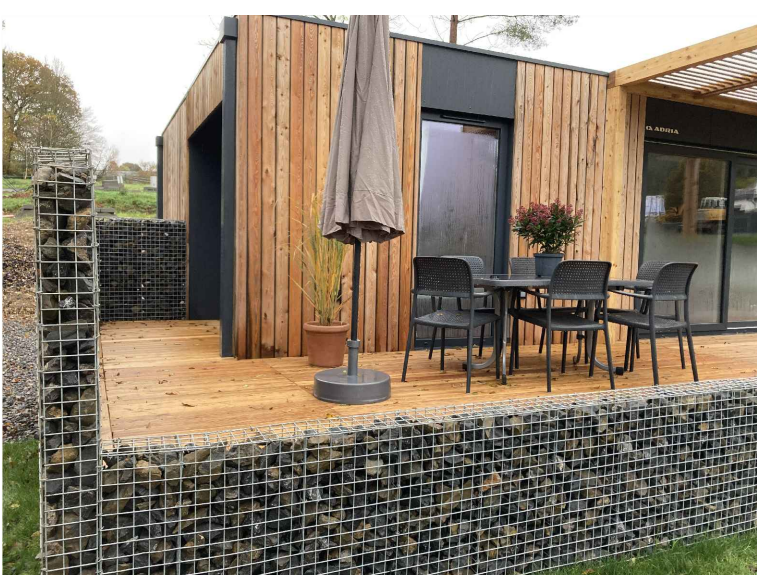
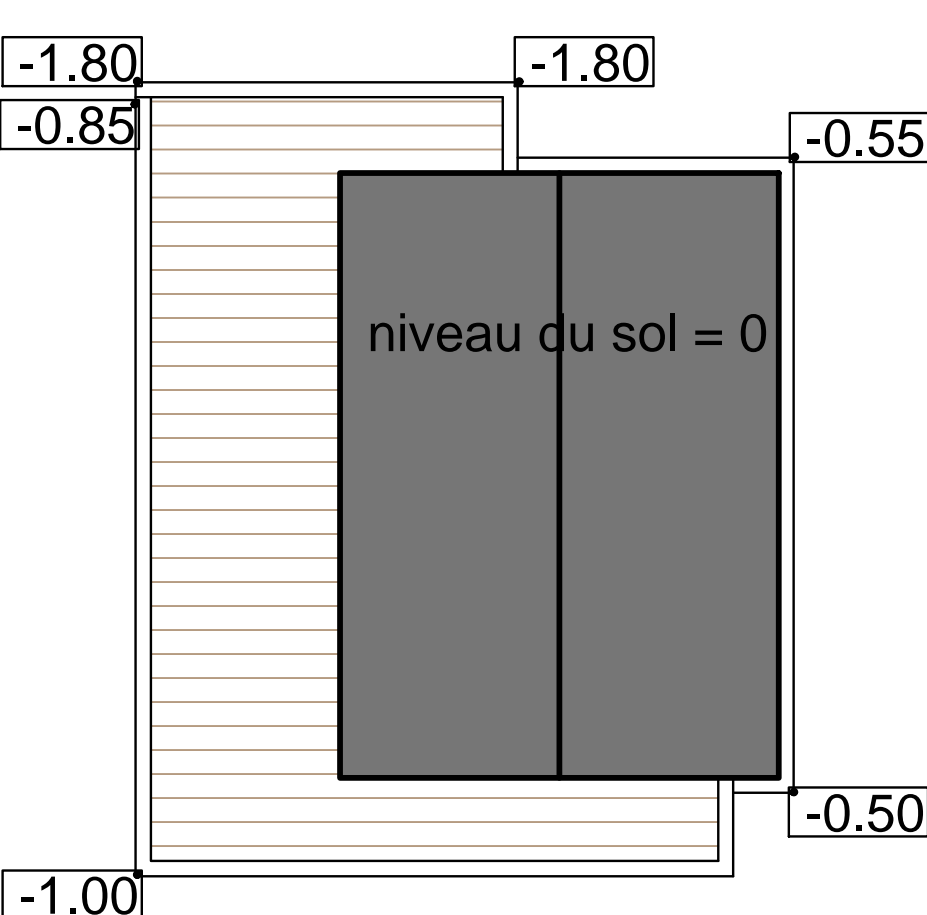
Mobil home Tiny house



Mobil home Glamping tente



Mobil home Domus



Pour accord:		EuroParcs Glampingresort Durbuy BV	
Le rendre:		Grand Bru 2 6941 Villers-Sainte-Gertrude	
L'architecte paysagiste:		Europarcs Durbuy	
L'architecte:		Mise en activité d'un camping de 148 emplacements. Implantation de Mobiles homes, de tentes et d'emplacements de passage. Mise en place d'une station d'épuration 500 EP, remise en conformité du gaz (deux réservoirs de gaz propane de 4000 litres). Utilisation des infrastructures déjà présentes sur le site (sanitaires existants, bâtiment d'accueil...) - Ancien camping à l'arrêt, PE expiré le 31/03/12	
L'entrepreneur:		Grand-Bru 2, 6941 Durbuy	
L'Administration Communale:		Cadastre: 11ème division, section B parcelles 20C, 5F, 5G, 6H, 7A, 7B, 8, 10A, 10B, 11A, 11B, 11C, 11D, 11E, 12C, 12D, 12F, 12G, 13B, 14A, 15, 20D, 20H, 20K, 20M, 20N, 20P, 20R, 25A, 26C, 26D, 29A, 32C, 32D, 33R, 34B, 36G, 41, 46C, 47C, 349	
L'Urbanisme:		Coupes projetées	
Les entrepreneurs sont tenus de vérifier les cotes. Les plans restent la propriété de l'architecte		impression: 27-08-21	
		feuille 6/6	